

NUMBERS ARE APPROXIMATE LOCATIONS ONLY!

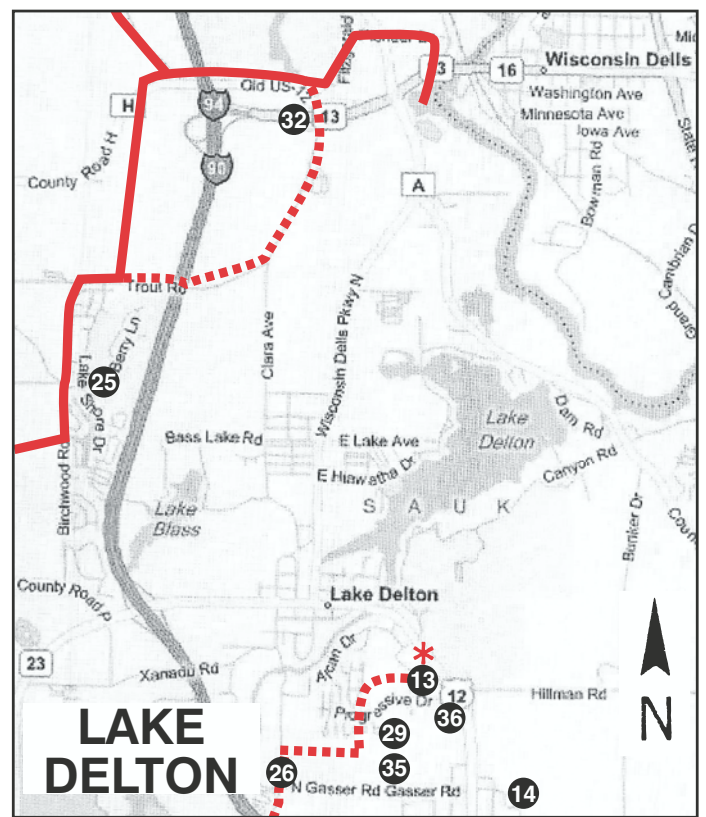
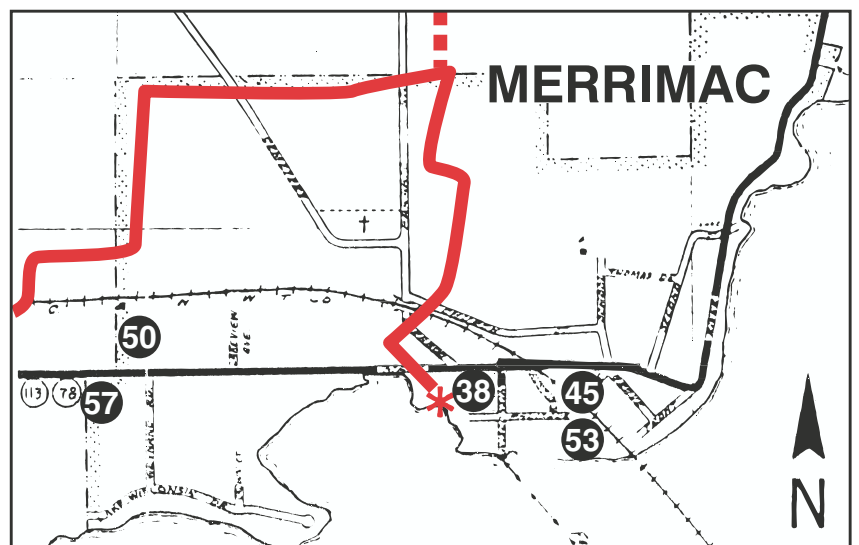
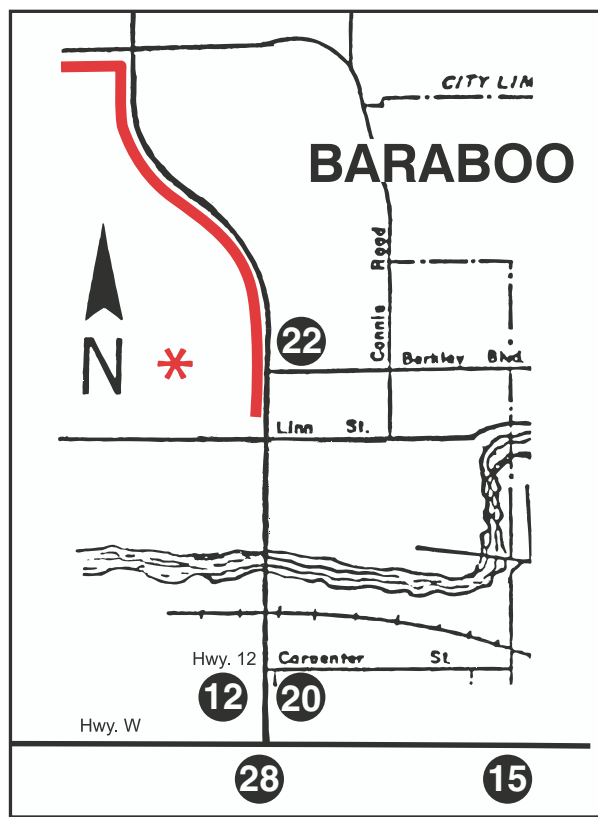
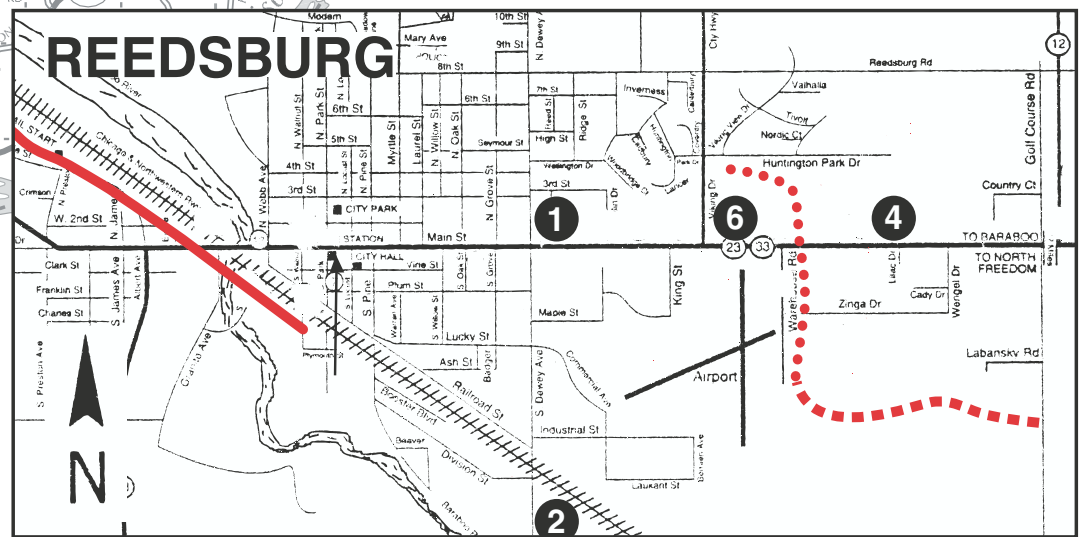
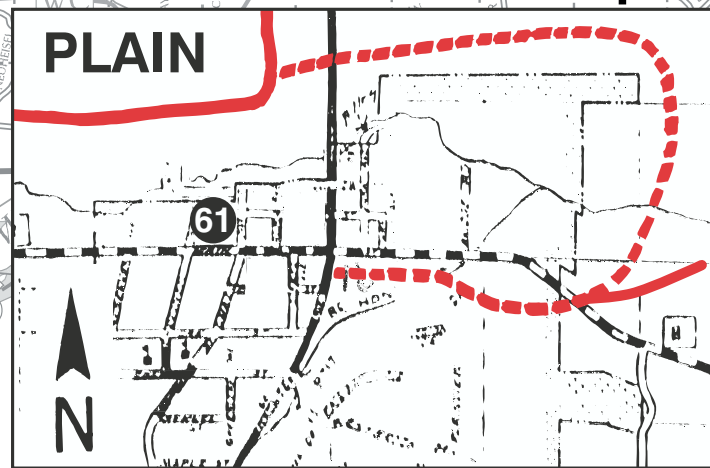
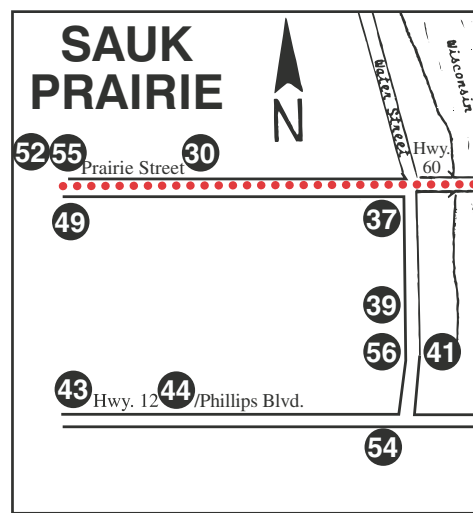
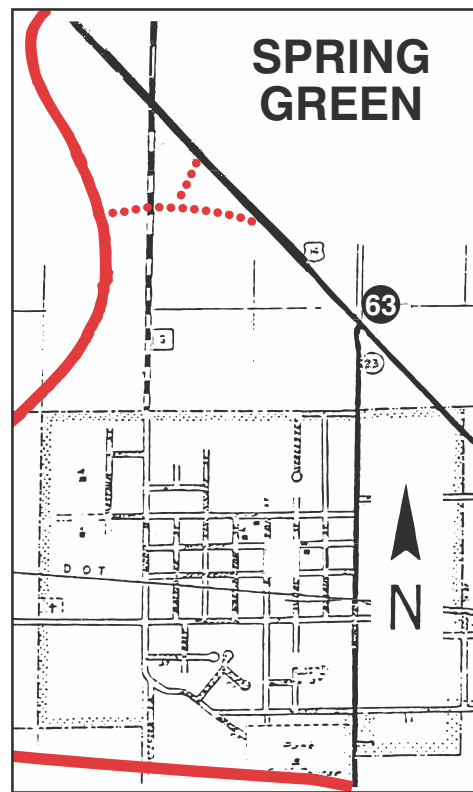
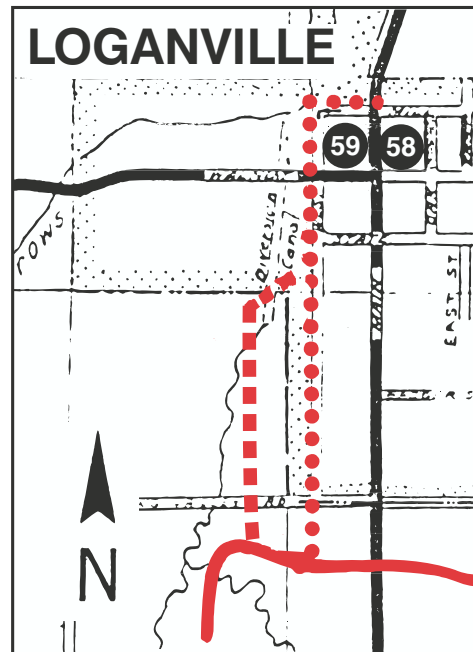
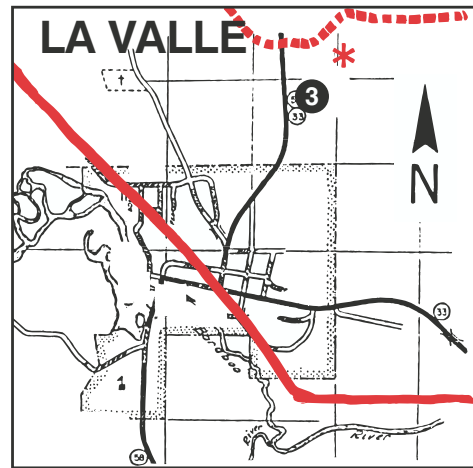
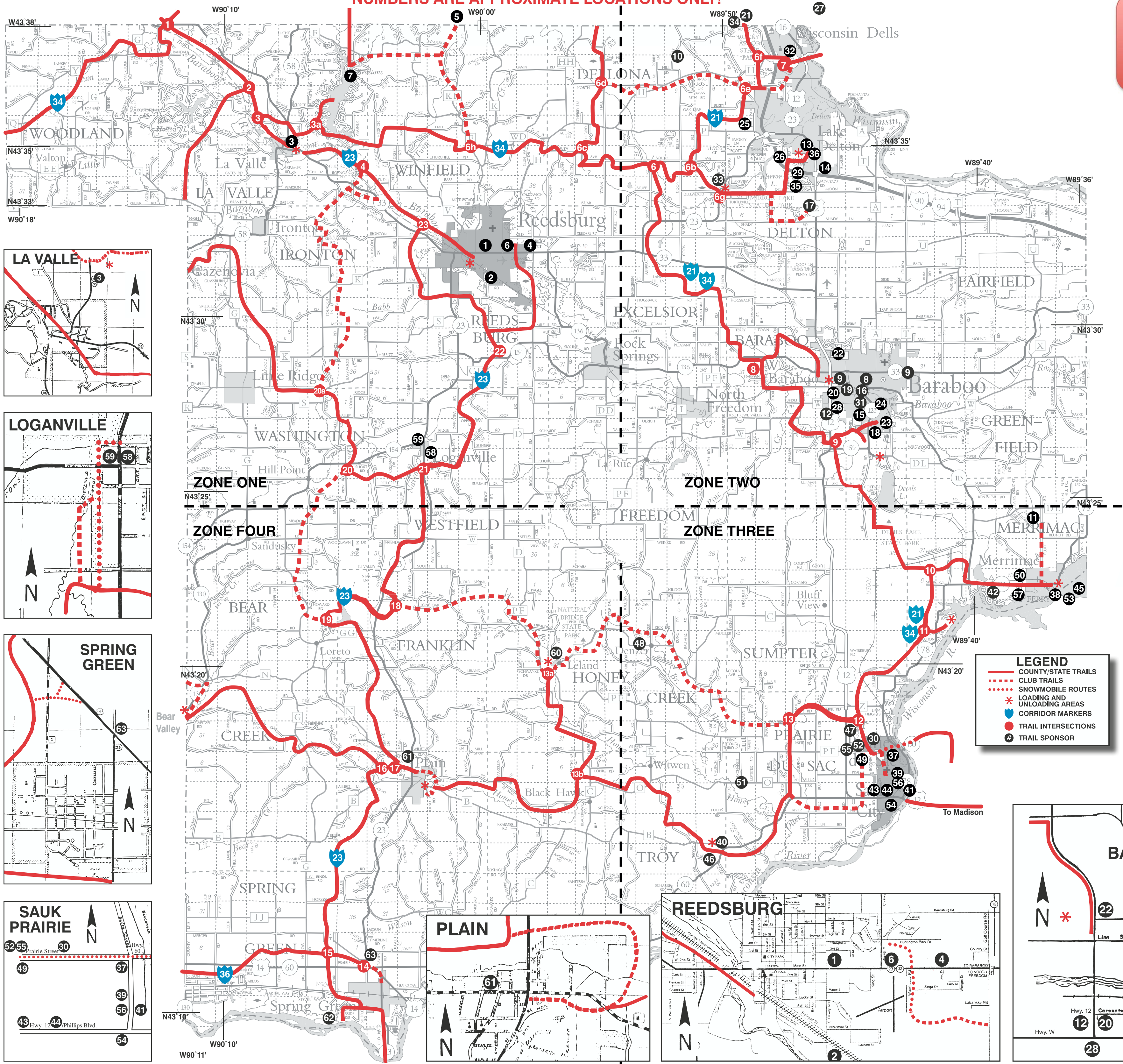
Stay updated with all Sauk Counties snowmobile meetings, fundraisers, & trail information with our new texting service! Simply text the key word "Groomer" to 313131 and you'll get automatic text updates on all our latest information!

**Riding
Off Trail is
Trespassing
\$263.50
FINE**

DUSK TO DAWN
NIGHT
55
MPH
ENFORCED

NOTICE TO SNOWMOBILERS

The land in this area is privately owned. By their kindness, these private land owners have allowed us to build snowmobile trails across their property. This permission is for trails only. Snowmobiling any place else on their land is trespassing. If you trespass, you will be reported to the Law Enforcement Authorities. You also may be sued for trespassing and damages by the landowner. We build and mark snowmobile trails for your convenience. You may ride on them at your own risk.
RESPECT OTHER PEOPLE'S PROPERTY!



- LEGEND**
- COUNTY/STATE TRAILS
 - CLUB TRAILS
 - SNOWMOBILE ROUTES
 - LOADING AND UNLOADING AREAS
 - CORRIDOR MARKERS
 - TRAIL INTERSECTIONS
 - TRAIL SPONSOR